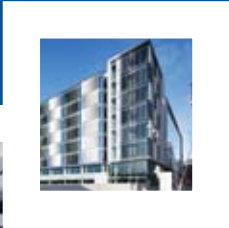
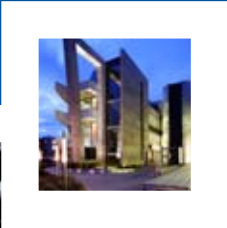
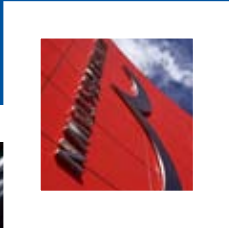




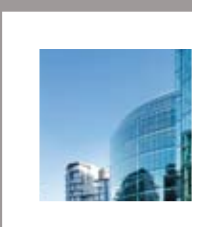
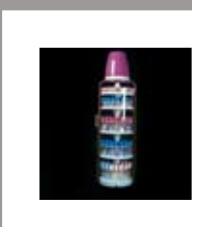
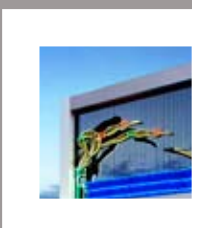
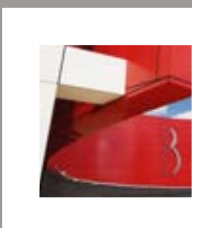
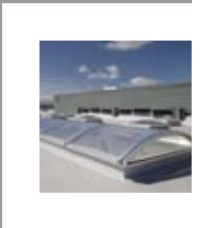
Plastics and Cladding







Our Mission	2
Our Vision	3
Brand & Core Values	3
Williaam Cox Overview	4
Plastic Distribution	5
Cladding & Rainscreen Cladding	6
Daylight Products	7
Smoke & Heat Ventilation	7
Curtain Walling	8
Acrylic Sheet	9
Foam PVC	9
Corriboard	9
Polycarbonate	10
Glazing Bars & Accessories	11
Dibond	12
PET & PETG	13
Engineering Plastics	13
PVC Cladding	13
Sign Gear System & Power LED	14
Our Standards	15
Why Choose Williaam Cox	15

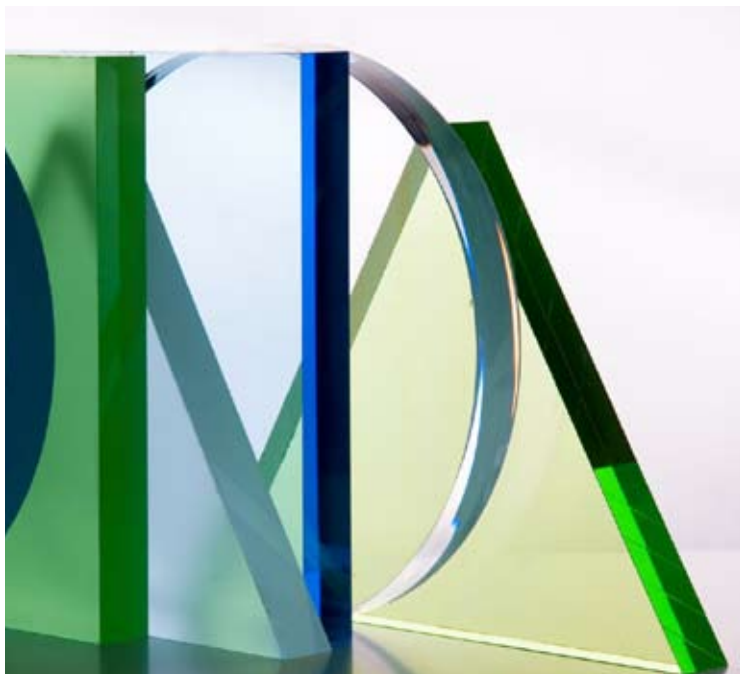


2 Our Mission



Our Mission

Williaam Cox are the leading specialist in Plastic Distribution, Coxdome Daylight Products, Smoke & Heat Ventilation and Curtain Walling in Ireland. Our mission is to "provide satisfaction through flawless implementation".





Our vision serves as a template engineered to set high design, procedural, manufacturing and installation standards. Our goal is to achieve sustainable quality growth through innovation and hard work.

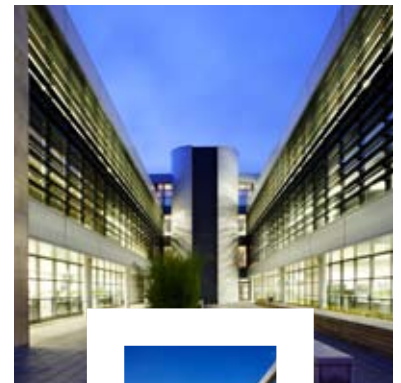


Brand & Core Values

Since its inception, Williaam Cox has been governed by its core values. They shape the culture and define the character of our company. They guide how we behave and make decisions.

Our Core Values...

- Financial Stability – We have the financial capability to manage risk and ensure project completion, whatever the scale.
- Design Solutions – We use our design expertise to deliver your concept at great value.
- Flawless Implementation – We drive for flawless project execution by anticipating the client needs, and emphasising quality work.
- Partner – We are your partner from project specification to sign off.



4 Williaam Cox Overview

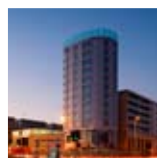


Williaam Cox Overview

We are the leading specialist in Plastic Distribution, Coxdome Daylight Products, Smoke & Heat Ventilation and Curtain Walling in Ireland.

Williaam Cox is ISO certified since 1993

Our company's portfolio consists of numerous prestigious projects that show our dedication, quality and expertise:



Plastic Distribution

Williaam Cox, are one of the largest suppliers of plastic sheet materials to the Irish Industry. The company's distribution business is responsible for the distribution of rigid plastic sheeting and a variety of products tailored to the needs of the sign, construction, display and engineering industries.

These materials range from thermoplastics such as acrylic, P.V.C. and solid polycarbonate, to cladding materials, which include aluminium composite panels, to security glazing materials.

Williaam Cox's Distribution Range includes:

- Perspex Acrylic Sheet
- Dibond®
- Engineering Plastics (Polypropylene, Polyethylene, Nylon)
- Foam PVC
- Lexan Polycarbonate (Solid & Multiwall)
- PET & PETG
- PVC Cladding (Wall Lining)
- Rainscreen Cladding (Trespa, Alucobond, Fibre C, Steni and Abet)
- Security Glazing
- Switch Gear Systems, fluorescent tubes and Power LED for Sign & Display Industries
- Adhesives

The Aviva Stadium was awarded 'Best Project and Innovation Award' as selected by EPSE (association of European Polycarbonate Sheet Extruders). This award recognises the benefits, innovativeness and creative applications of polycarbonate by Williaam Cox.



6 Cladding / Rainscreen Cladding

Cladding



Williaam Cox offer full rainscreen/cladding solutions in both unitised and supply and fit options. We are unique in that we design and manufacture full wall systems in off-site construction, which can achieve up to 1.2Wm²k. We offer a comprehensive range of cladding materials such as Trespa, Alucobond, Fibre C, Steni and EuroFox secondary fixing. Rainscreen panel systems enhance design while offering a robust and durable finish.



Rainscreen Cladding

Rainscreen Cladding is used to protect the fabric of a building whilst giving it a decorative finish. This type of cladding has grown in popularity due to its high performance and virtually maintenance free decorative surface.

A special characteristic of the rear ventilated cladding system is its guaranteed performance. System effectiveness is maintained even when unfavourable internal or external atmospheric conditions are experienced.

Trespa Meteon is a flat panel based on thermosetting resins homogeneously reinforced with wood fibre and manufactured under high pressure and temperature. Using special techniques the panels have an integrated, decorative surface with pigmented resins.

Alucobond is a versatile aluminium decorative panel for interior and exterior use. It is manufactured as a composite sheet material with high strength and rigidity, which is capable of being re-formed and shaped, resulting in a smooth and attractive finish.

All boards are suitable for façades, fascias and soffits, canopies, balconies etc.

All of our cladding boards are offered with a comprehensive range of fixing systems.

Fibre-C is a concrete based panel with reinforced glass fibres which combines the advantages of concrete and glass fibres in a single product: it is as strong, mouldable and durable as concrete, but is also thin walled, fire proofed and light-weight as a result of the glass fibres.

STENI – Steni colour is a facade panel made of glass fibre reinforced polymer composite, with a smooth surface of electron beam cured acrylic. (100% acrylic without use of solvents). Steni colour has the same documented quality as the other products, impact, water and weather resistance. The facade panel is suitable for both new buildings and renovation of buildings.

ABET- MEG is a self-supporting high pressure laminate (HPL) with decorative surface that is suitable for exteriors. It is fade resistant and weather-proof and complies with standard EN 438:2005 Part 6. MEG is a durable material, available in a wide range of colours. Its excellent technical properties make it suitable for the building industry, where it offers an ideal alternative to traditional materials. MEG is used to clad facades and balconies, for street furniture and external signs, and is suited for the creation of ventilated facades.



Daylight Products



The name COXDOME has become a household name in the construction industry, bringing natural daylight and ventilation to buildings.

Our range offers high quality glass / polycarbonate roof light systems and access hatches in many shapes and sizes. They meet the latest Building Regulations and are available with a variety of options, such as double and triple skins, safety grids, opening sections for ventilation purposes.



The COXDOME range has been extended significantly in the past number of years and as market leader in the industry, we have introduced a wide range of glass roof lights to meet the diverse demand in this sector. We now offer fully thermally broken glass roof lights for every application.

Smoke & Heat Ventilation



The range of COXDOME Smoke and Heat Exhaust Ventilation Systems (SHEVs or smoke vents) consists of various different types of mechanical and natural smoke ventilators. Our ventilation systems provide both smoke and day-to-day ventilation, they comply with the latest Building Regulations on Fire Safety, have been tested to EN 12101 and can be integrated into any Building Management System.

We provide stairwell kits and smoke shaft ventilation for residential buildings.

As part of our COXDOME Smoke & Heat Ventilation range we also supply and install Smoke Curtains and Smoke Screens. Smoke (Channelling) Screens (also known as balcony edge screens or downstands) are used to compartmentalise different parts of a building.

They contain smoke and limit smoke travel from the fire source, preventing fire from spreading to other areas. COXDOME Smoke Screens and Curtains are tested to and exceed the requirements of BS 746 -Part 1- and BS 476 -Part 20-.

With a dedicated Service and Maintenance Department we have the ability and expertise to design, build, commission and maintain any smoke or natural ventilation system in the most complex of buildings.

8 Curtain Walling

Curtain Walling



With over four decades of experience we have earned our reputation of dedication, quality and expertise in the design, procurement, manufacture and installation of various large scale specialist/bespoke glazing and cladding projects.

Williaam Cox offer a complete building envelope solution. We offer our customers the benefit of a single point of contact to manage the installation and more importantly the interface between the various packages contained within the complete envelope.

Our main expertise is in unitised curtain walling, multiple skin facades which are manufactured off-site on our two dedicated unitised production lines.



Acrylic Sheet

Cast Sheet the most outstanding properties of cast acrylic sheet are its optical transparency, versatility and its high impact resistance and lightness in comparison to glass, with a light transmission rate of 93%. Its range of colours and sizes are vast allowing use in a wide range of areas including signage, construction, engineering, and lighting. They have outstanding weatherability and come with a 10 year warranty against outdoor exposure.

Extruded Sheet is the most competitive type of acrylic sheet. It will not yellow in 10 years, maintaining its appearance for several years. It is readily thermoformed with the protective masking still in place. Extruded acrylic has excellent surface hardness; it is recyclable and is produced to a thickness tolerance of +/-5 to 10%.



Acrylic sheet is ideal for illuminated signage, POS displays, shop fitting, lighting etc. A wide variety of products are manufactured in-house using various processes such as line bending, vacuum forming, diamond polishing and CNC-routing.

Foam PVC



Foam PVC is a lightweight, durable, versatile sheet that can be used for both indoor and outdoor applications due to its excellent weathering resistance. It can be easily shaped, printed on, painted, cut, drilled, filed, glued and thermoformed.

The surface is extremely flat and smooth allowing work of high quality definition. It is available in a range of colours, thicknesses and a high gloss finish. It is non-flammable, self-extinguishing, a good thermal insulator, it is easily fabricated, vacuum formable, printable and washable in water.

Applications. Foam PVC sheets can be used in the following areas for signs, posters, and exhibition stands, for use in false ceilings, partition walls, interior decorations etc.

Corriboard

Corriboard signs are the ideal solution for temporary and safety signs. They are lightweight, durable and are suitable for outdoors over short periods of time.



10 Polycarbonate



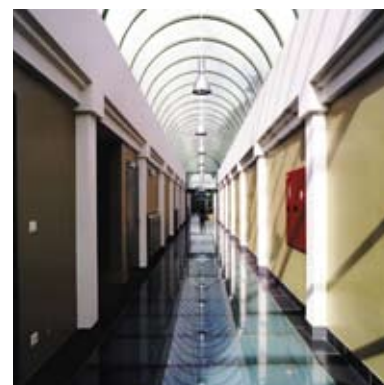
polycarbonate is ideal for outdoor use and has a 10-year warranty. Other grades available are abrasion resistant and static dissipative polycarbonate.

Multi-wall Polycarbonate Multi-wall polycarbonate is an energy saving high performance range of polycarbonate sheet.

Although light in weight, multi-wall polycarbonate is 200 times stronger than glass and virtually shatterproof. It has good transparency and excellent thermal insulation properties with good fire performance.

Multi-wall polycarbonate is the ideal energy saving glazing material for conservatories, greenhouses, high level glazing and large area glazing. Its sound insulation properties make it ideal for partitions, false ceilings and privacy screens.

During manufacture a layer of UV absorber is co-extruded onto the outer surface of the sheet forming a barrier against UV radiation giving a 10-year warranty against yellowing and breakage.



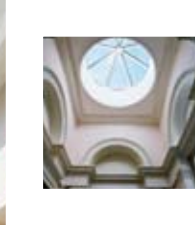
Polycarbonate

Solid Polycarbonate

Polycarbonate sheets are as transparent as glass, but 200 times stronger and only half the weight.

Polycarbonate has an exceptional fire performance and is available in bronze, opal and a textured finish and has a light transmission of 90% in clear.

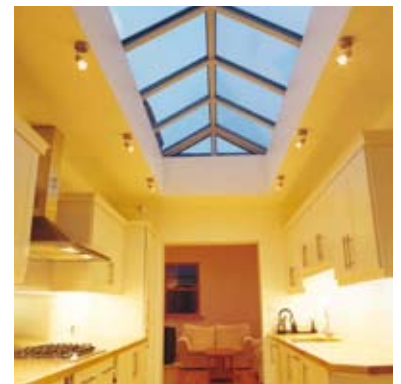
Therefore Polycarbonate sheets are ideal for curved or flat roof and window glazing in areas where vandalism, high impact resistance or security is a concern. Polycarbonate has many indoor applications including: machine guarding, see through screens and ballustrading. A UV plus grade of polycarbonate means that



Self-Supporting Glazing Bar

This bar is used for large lean-to roofs or commercial glazing applications where long spans or heavy loading specifications are required. It has a maximum self supporting span of up to 4.15 meters at 600mm centers and is suitable for 16mm - 25mm thick polycarbonate sheet or glass units.

We also stock the following: Universal Edge Bar, Variable Pitch "Eaves Beam" & Variable Pitch "Wallplate".



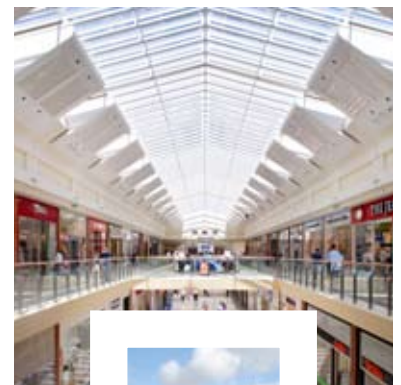
Glazing Bars & Accessories

Snap-Fix Rafter Supported Glazing System

This is a simple easy fit glazing system for any thickness of polycarbonate sheet from 10mm to 25mm. The bar consists of an aluminium glazing base section with gaskets installed, snap-fix PVC glazing bar top capping (white & brown) with co-extruded gasket and screw fix end plate.

Aluminium Rafter Bar

Also a rafter supported glazing system this bar consists of aluminium powder coated glazing cappings (white & brown) with clip in bead to seal and cover screw fixings. Rubber base gasket fixes onto timber rafters to glaze polycarbonate sheet or glass units.



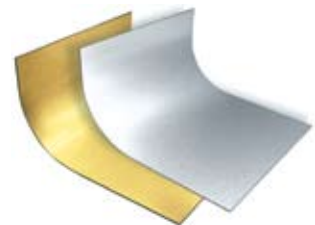
12 Dibond

Dibond

Dibond is a lightweight but rigid and durable aluminium composite material. Two sheets of 0.3mm aluminium bonded to a thermoplastic core make up Dibond. It is stove lacquered to the highest level of production giving the benefits of high quality lacquer and composite as well as high weather resistant. Dibond is simple to fabricate, you can bend it, rout it, fold it, cut it, saw it & drill it. Three dimensional forms can be achieved by means of folding and bending.

Dibond coloured sheets are double sided one side matt and one side high gloss (85%). Dibond's rigidity and aesthetic fitness means it is the ideal substrate for - Signage, Point of Sale/Display, Exhibits, Freestanding displays, Screen-printing - Photo mounting and Industrial Applications.

Dibond can be exposed to any type of weather conditions and has a fire rating that will achieve Class O. It has an extremely low expansion rate and is totally recyclable.



PET & PETG

PET & PETG have a light transmission of up to 90% combined with high surface gloss and optical quality. The sheets feature an excellent impact strength, which allows for punching; die cutting and cold bending amongst others. (All processes are carried out at Williaam Cox).

PET & PETG sheets feature exceptional thermoforming properties with excellent mould flow properties and can be thermoformed at low temperatures. The Polyester sheets comply with major European Fire Regulations; they feature excellent chemical resistance outperforming acrylic and polycarbonate sheets.



Applications of PET & PETG Some typical applications include the following - Point of Sale, Shop Fitting, Machine Guards, Food Displays & Medical Apparatus.



Engineering Plastics

Through a wide knowledge of plastics and an extensive network of suppliers a wide range of engineering plastics are available. Polypropylene, polyethylene and nylon to mention a few are available in different thicknesses, colours, sheet sizes and grades. The availability of engineering plastics coupled with our extensive range of sheet profiles materials enables Williaam Cox to extend the "one-stop shop" practice to the engineering industry and the tool room.



PVC Cladding

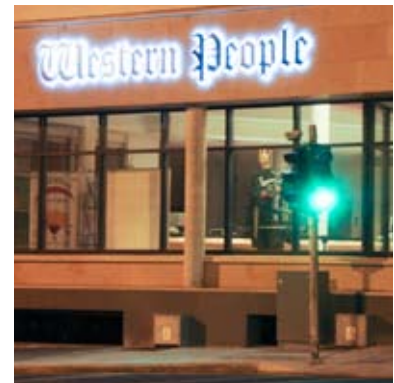


PVC wall lining is extremely tough and has a smooth hardwearing surface. It is hygienic, impermeable, non-porous and does not support bacterial growth. It is non-toxic, easily cleaned, maintenance free, is not affected by a wide range of chemicals and has excellent fire performance (Class O). PVC wall lining is ideal for sensitive areas in hospitals, laboratories, food processing, commercial kitchens, pharmaceutical manufacturers etc.

We also supply a comprehensive range of profiles and accessories allowing us to offer a complete wall lining solution.



14 Sign Gear System & Power LED



Sign Gear System & Power LED

To further extend our "one-stop shop" service to the sign and display industries we have been providing switchgear lighting systems for many years. Switchgear is required to run a fluorescent tube. Rear illuminated sign panels using translucent materials, POS units, displays and general lighting requirements all use fluorescent tubes for illumination. Switchgear is available in single, double, triple or electronic configurations.

The latest addition to our portfolio has been the introduction of Power LED. LEDs (light emitting diode) are available as chains, strips or modules and offer a safe, flexible and convenient way to illuminate signs, POS units and product displays. Operating off 8 or 12v and available in a range of colours, LED offers designers the freedom to illuminate areas which were not possible before.

Why Choose Williaam Cox



Why Choose Us!!

We have:

- A strong Customer Focused work ethic
- A Partnership Approach with Clients many of whom we have worked with for more than 30 years
- Experienced Professionals and technical knowhow
- Advanced Technology (Design & Manufacture)
- Quality management system- ISO 9001-2000
- Culture of Innovation & Creativity

Financial Strength

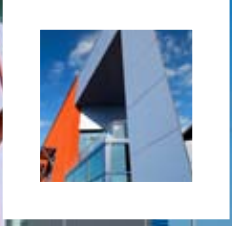
- As a successful Associate company of CRH plc & John Sisk & Son Ltd.
- Warranties and Bond Availability
- A sound track record

Setting higher standards

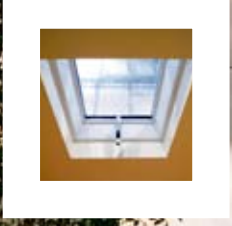
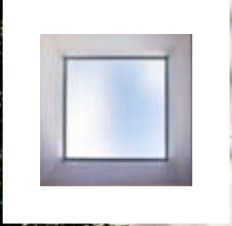
Williaam Cox Ireland Ltd are committed to continuous improvement and have followed the Business Excellence Model of selfassessment devised by the European Foundation for Quality Management (E.F.Q.M.). From a quality perspective, the company complies with the requirements of the I.S./ISO 9001/EN 29000 standards set by the N.S.A.I.



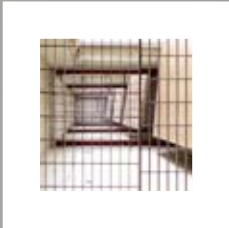
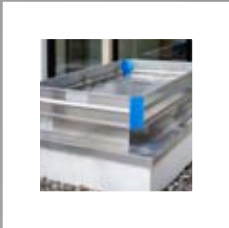
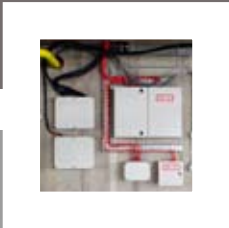
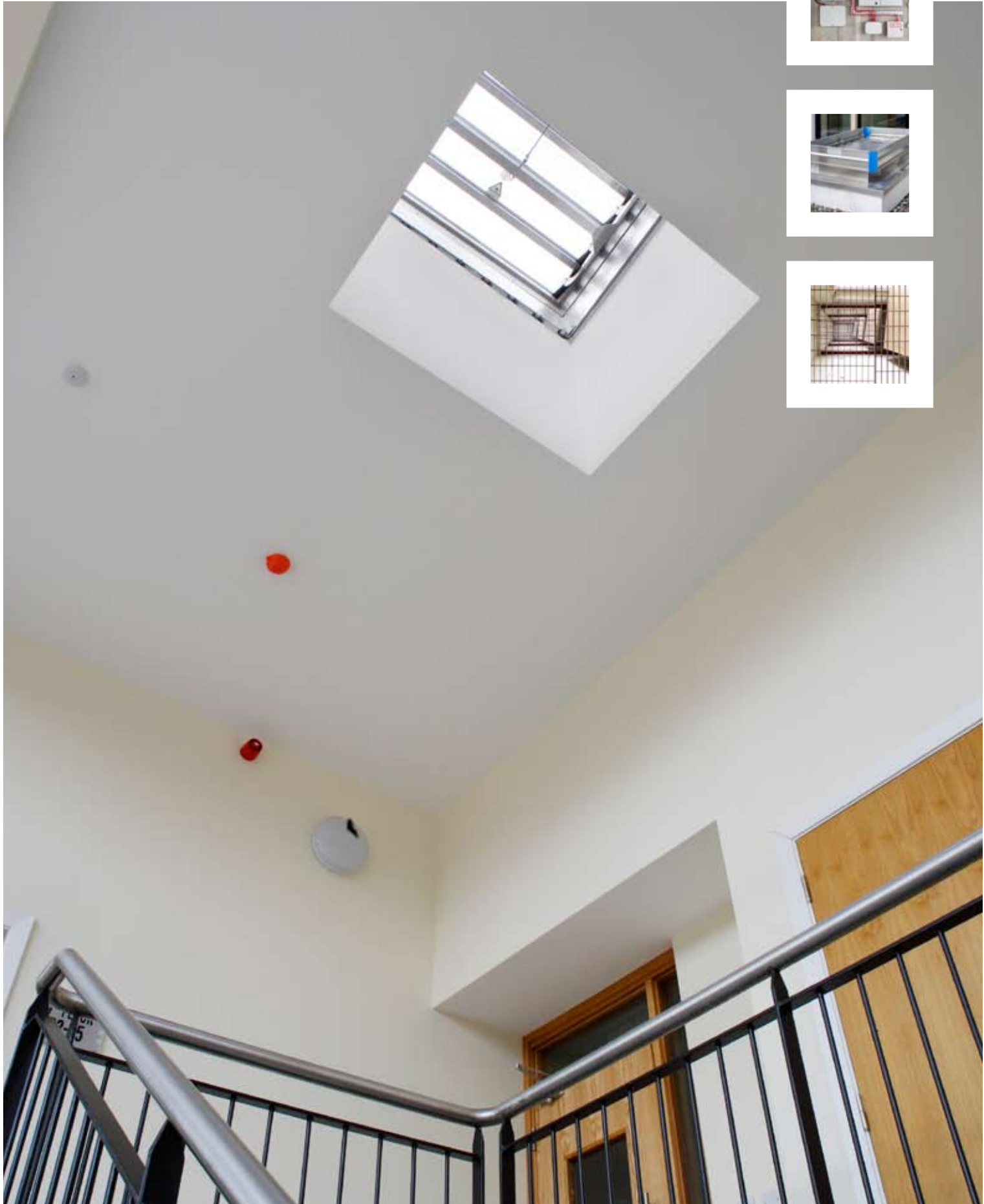
16 Other Divisions Within Williaam Cox Ireland Ltd.



Architectural Glazing



Coxdome Daylight Products



Coxdome Smoke & Heat Ventilation

Dublin

Cloverhill Industrial Estate, Clondalkin,
Dublin 22, Ireland

Tel: +353 (0)1 460 5400 **Fax:** +353 (0)1 450 0481

Email: plastics@williaamcox.ie **Web:** www.williaamcox.com

Belfast

Unit 5, Westbank Business Park, West Bank Drive,
Belfast, County Antrim, BT3 9LA

Tel: +44 (0)28 9077 9600 **Fax:** +44 (0)28 9077 6320

Email: sales@williaamcox.com **Web:** www.williaamcox.com

